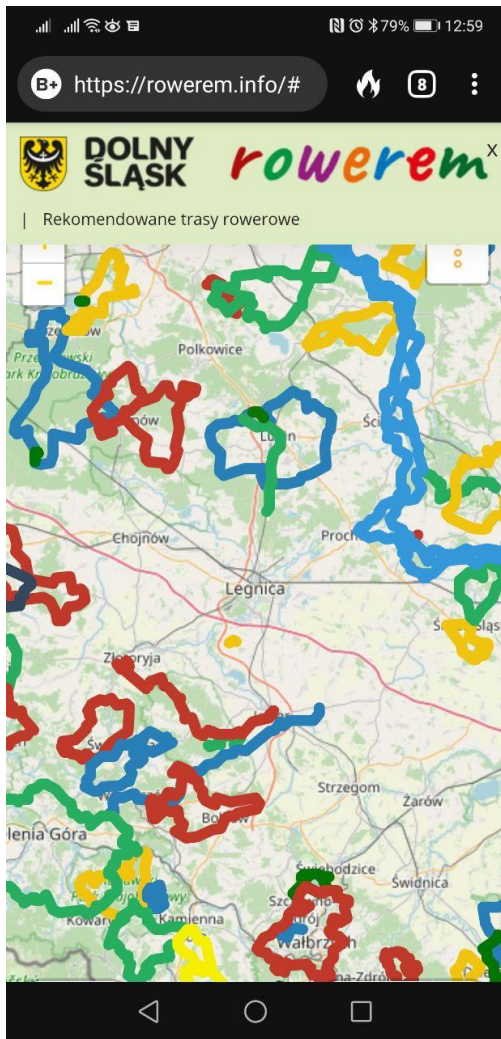




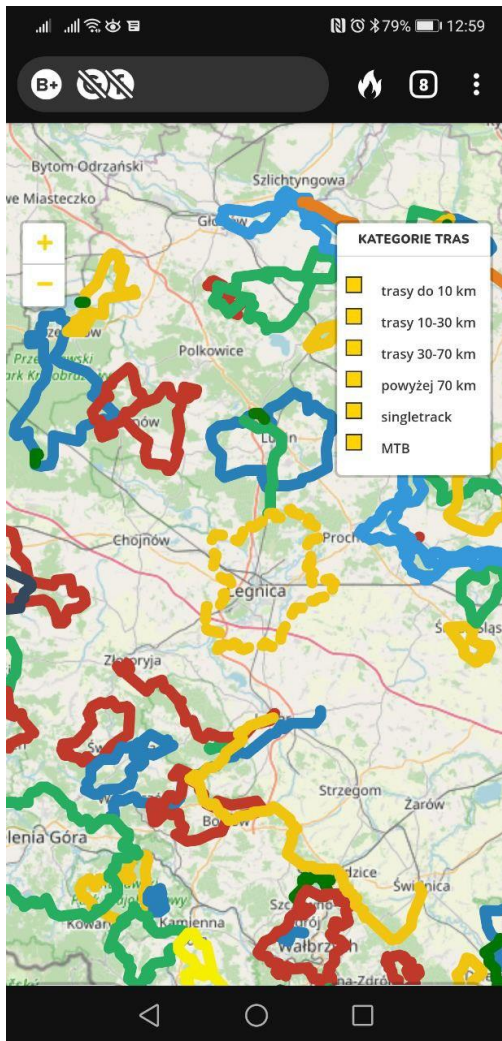
**DOLNY
ŚLĄSK**

kowerem

Poleca Dolnośląska Organizacja Turystyczna



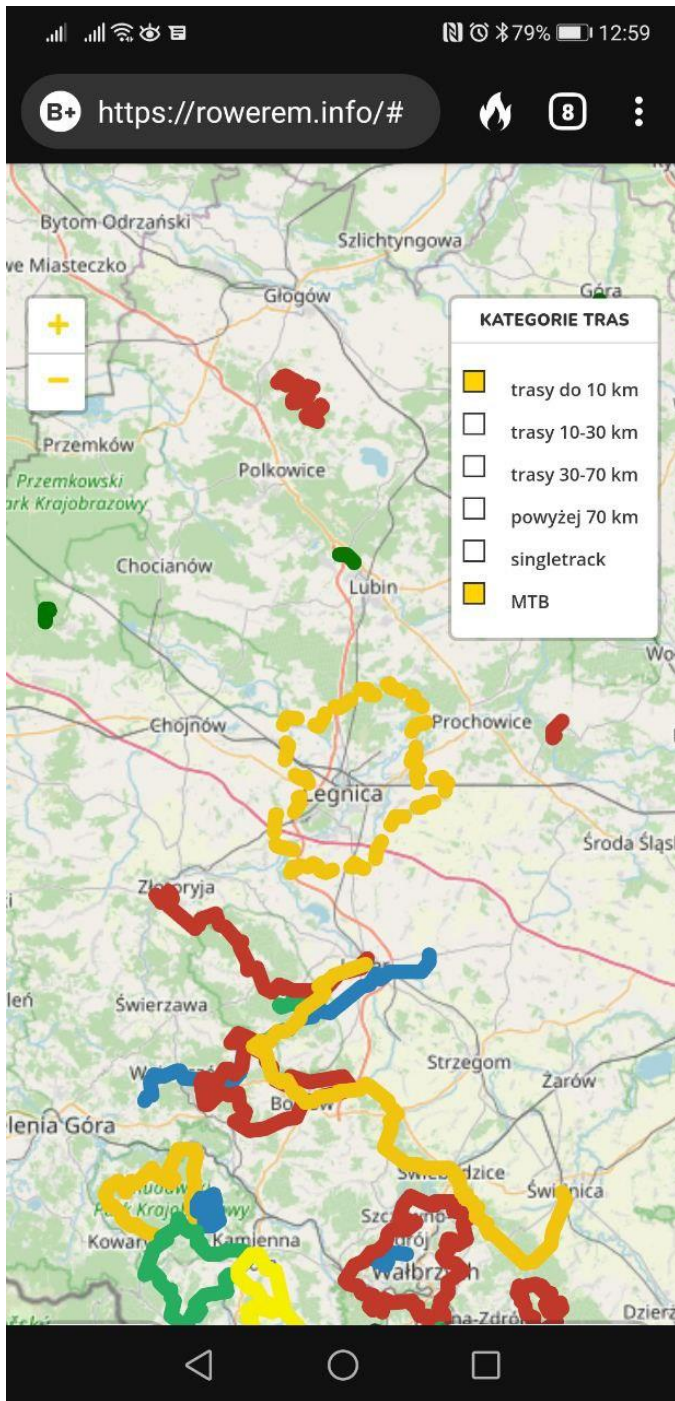
Header has to stay but to be hidden on click



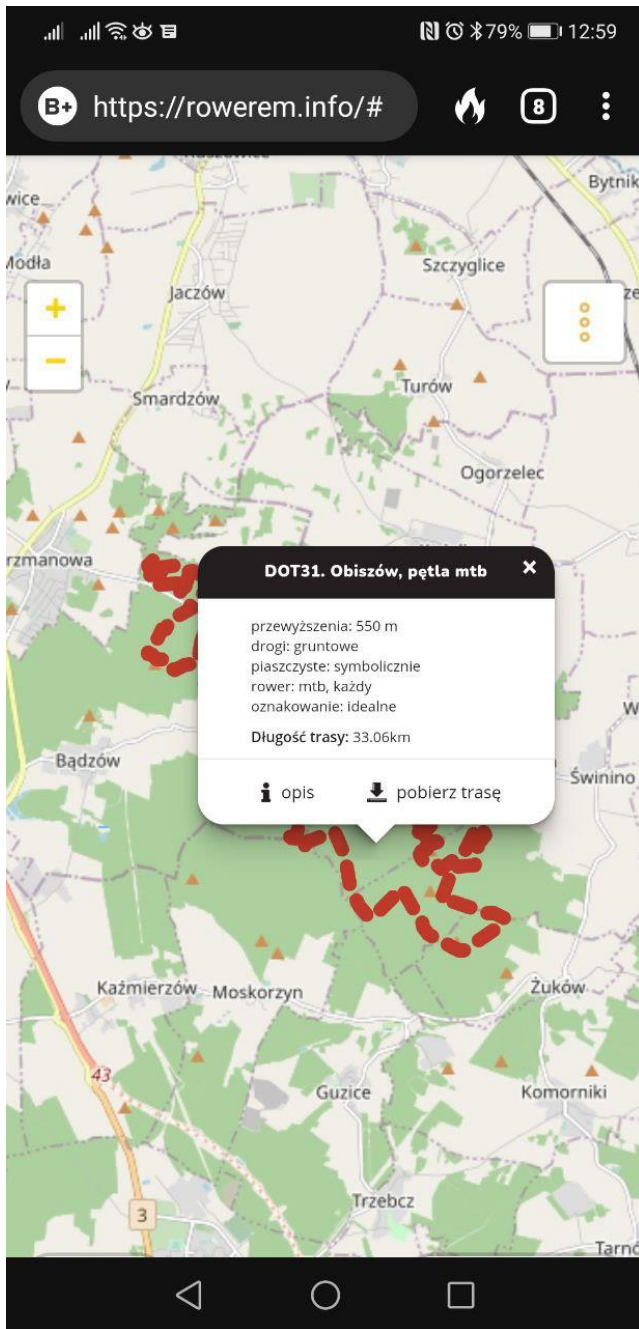
Categories are taken from [.info/api/pl/categories](#)

PI – language has to be detected based on user platform language

Categories are checked by default



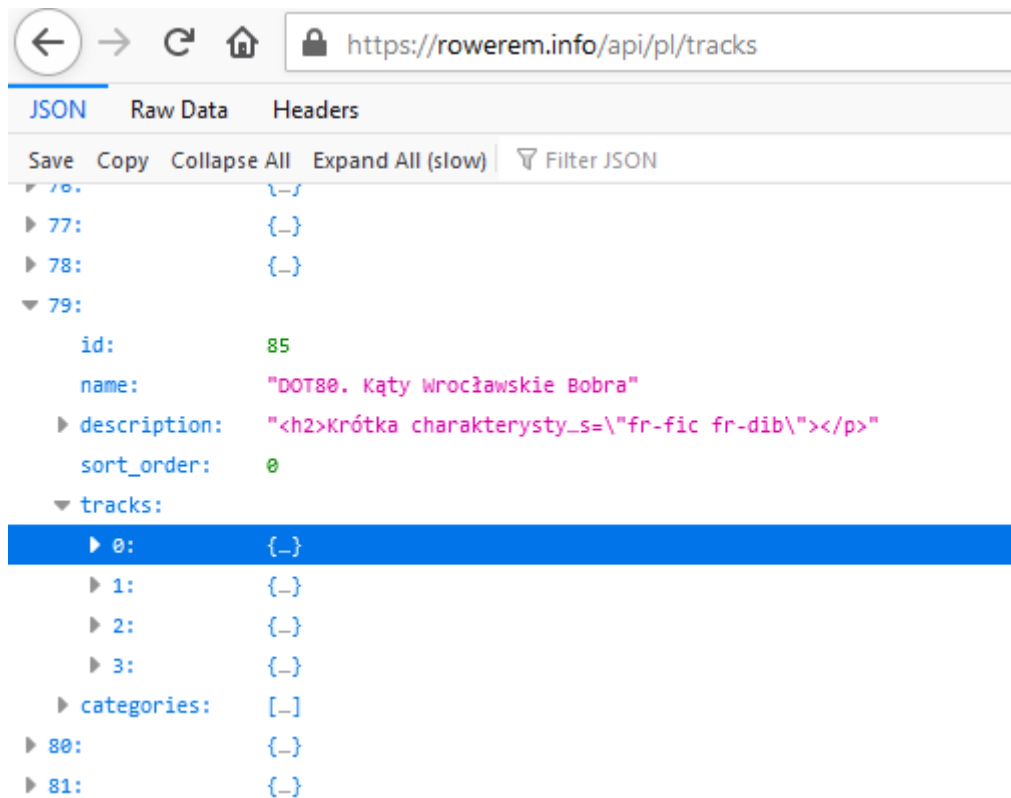
.info/api/pl/tracks



pl/trackdescription/{id} to get info

pl/trackfiles/{id} To download

Clicking on the particular route will summon the window with the info.

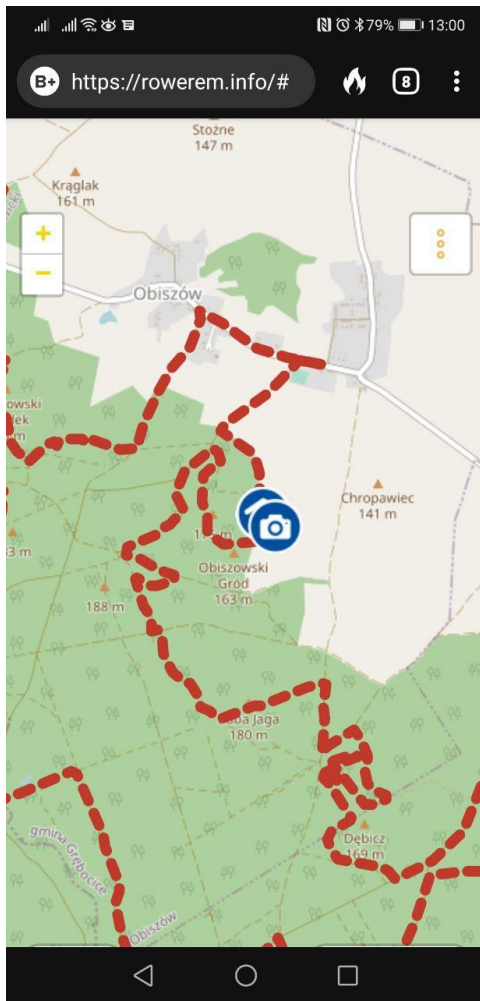


Sometimes there's more than one route for a single track.

Each has a different short description, but main description is the same.

Has its own colour, line width, continuous/dashed

Map markers



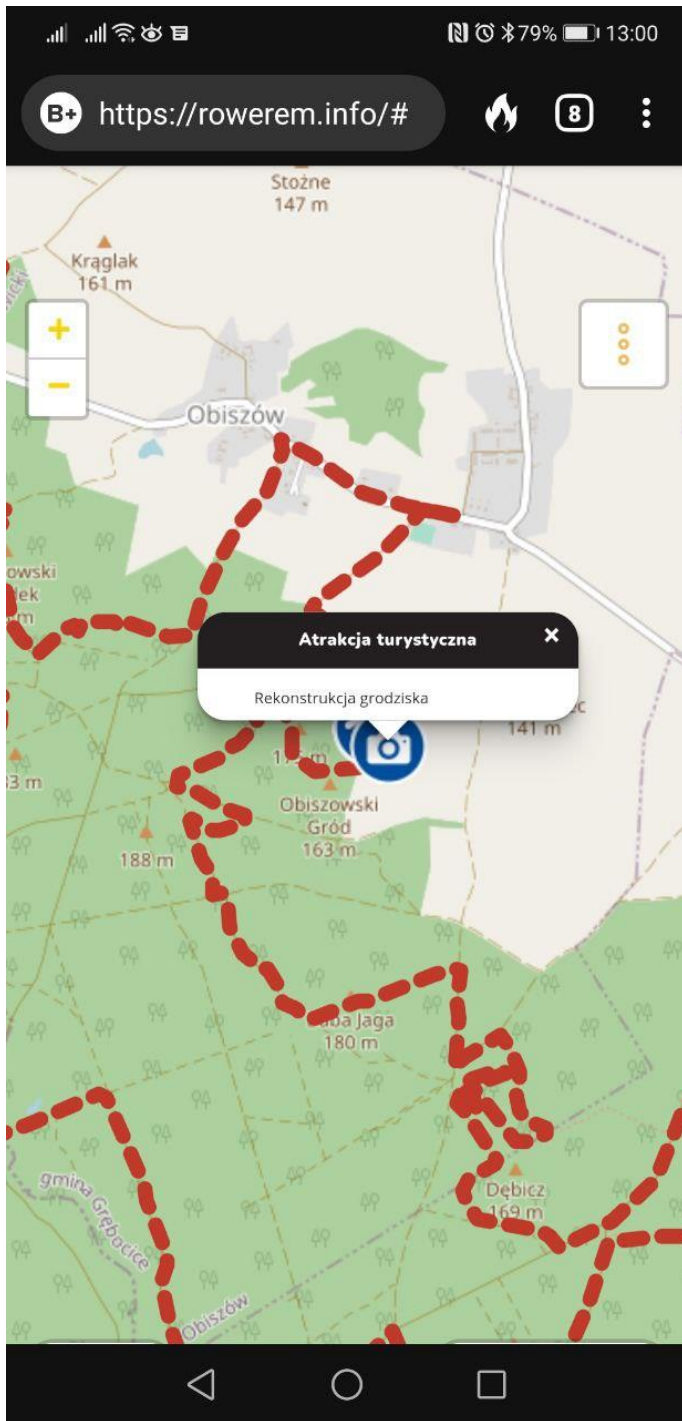
Appear when you zoom closely (in leaflet zoom ≤ 13)
<https://rowerem.info/api/pl/trackmarkers/{id}>

- Have their own description
- Own icon
- Name
- Latitude
- Longitude

Browser navigation bar showing the URL <https://rowerem.info/api/pl/trackmarkers/85>. Below the URL bar are tabs for "JSON", "Raw Data", and "Headers". A toolbar contains "Save", "Copy", "Collapse All", "Expand All", and "Filter JSON".

<https://rowerem.info/api/pl/trackmarkers/85>

```
0:
  id: 387
  name: "początek trasy"
  description: null
  lat: "51.03099737733895"
  lon: "16.773124337196354"
  marker_type: {}
1: {}
2: {}
3: {}
4: {}
5: {}
6: {}
7: {}
8: {}
9: {}
```



On marker clicked get popup info